

3/4" MPT & 1" SLIP IN-LINE "T" SCREEN FILTERS

APPLICATIONS

● Designed for installation on suction or discharge side of pump on systems with flow rates up to 25 GPM, these filters provide an effective means for removing large volumes of sediment. They are ideal for whole house filtration, agricultural and commercial / industrial applications. Overall filtration costs are greatly reduced when used as a pre-filter in duplex filtration systems by preventing post-filtration cartridges from plugging prematurely before their absorption ability is exhausted, maximizing the capacity / utilization of the carbon. This dramatically increases the life span of taste and odor, granular carbon and other fine micron cartridges.

FEATURES/CONSTRUCTION/RATINGS

- Spin out action creates centrifugal force which ensures that particulate is forced outward to the filter bowl protecting the filter element from abrasion. For this reason, it is important that the proper size filter housing is used: Up to 1- 25 GPM use 3/4" or 1" housing, 10 - 50 GPM use 1 1/2" housing, 18 - 100 GPM use 2" housing. Oversizing the filter can lead to excessive wear or premature clogging of the filter element due to the lack of spin-out action
- Molded heavy duty PVC filter body
- Clear polycarbonate filter bowl allows for visual inspection of flow and filter performance
- Each filter is shipped complete with a purge valve for the 1/2" MPT drain cleanout port providing an easy means to flush (clean) filtrates which are deposited on the outside of the filter screen without having to shut off the water supply
- All materials are non-corrosive and are ultraviolet stabilized / weather resistant
- Dimensions: Length 8 1/2", Width 5", Inlet / Outlet 1" Slip or 3/4" MPT
- 150 PSI Maximum Working Pressure
- Maximum Operating Temperature 100°F (38°C)

WARNING: HAND TIGHTEN ONLY - USE OF TOOLS VOIDS WARRANTY



3/4" MPT FILTER UNITS COMPLETE WITH POLYESTER ELEMENTS

PART NO.	UPC 777808+	LIST PRICE-A	CONN.	MESH	MICRON	OPENING
PE-SF75-024	309641	\$ 81.14	3/4" MPT	24	711	.028"
PE-SF75-030	309658	81.14	3/4" MPT	30	533	.021"
PE-SF75-040	309665	81.14	3/4" MPT	40	381	.015"
PE-SF75-060	254743	82.08	3/4" MPT	60	254	.010"
PE-SF75-100	223664	82.08	3/4" MPT	100	152	.006"
PE-SF75-140	254750	82.08	3/4" MPT	140	104	.004"
PE-SF75-250	254767	84.92	3/4" MPT	250	61	.0024"
PE-SF75-500	254774	84.92	3/4" MPT	500	30	.0012"
PE-SF75-1000	254781	84.92	3/4" MPT	1000	15	.0006"



1" SLIP FILTER UNITS COMPLETE WITH POLYESTER ELEMENTS

PART NO.	UPC 777808+	LIST PRICE-A	CONN.	MESH	MICRON	OPENING
PE-SF10-024	309672	\$ 72.45	1" Slip	24	711	.028"
PE-SF10-030	309689	72.45	1" Slip	30	533	.021"
PE-SF10-040	309696	72.45	1" Slip	40	381	.015"
PE-SF10-060	215317	74.33	1" Slip	60	254	.010"
PE-SF10-100	215324	74.33	1" Slip	100	152	.006"
PE-SF10-140	215331	74.33	1" Slip	140	104	.004"
PE-SF10-250	215348	76.49	1" Slip	250	61	.0024"
PE-SF10-500	215355	76.49	1" Slip	500	30	.0012"
PE-SF10-1000	215362	76.49	1" Slip	1000	15	.0006"

REPLACEMENT PARTS

PART NO.	SIZE	DESCRIPTION	LIST PRICE-A
43-HB07TS	3/4" MPT	Replacement Filter Head/Body (White PVC)	\$ POR
43-HB10TS	1" Slip	Replacement Filter Head/Body (White PVC)	27.97
43-HC10T		Replacement Filter Cover/Bowl (Clear Polycarbonate)	28.73
		Replacement bowl does not include purge valve	

NOTE: See elements and accessories on Page 6-3

1 1/2" & 2" IN-LINE T AND COMBO FILTER HOUSINGS

APPLICATIONS

- Designed for installation on suction or discharge side of pump on systems with flow rates of 10 - 50 GPM (1 1/2" filter housings) and 18 - 100 GPM systems (2" filter housing), these filters provide an effective means for removing large volumes of sediment. Ideal for whole house, agricultural, commercial / industrial applications. Greatly reduces overall filtration costs when used as a pre-filter in duplex filtration systems by dramatically increasing the life span of taste and odor, granular carbon and other fine micron cartridges. Preventing post-filtration cartridges from plugging prematurely before their absorption ability is exhausted, maximizing the capacity / utilization of the carbon.

FEATURES/CONSTRUCTION/RATINGS

- Spin out action creates centrifugal force which ensures that particulate is forced outward to the filter bowl protecting the filter element from abrasion. For this reason it is important that the proper size filter housing is used: Up to 25 GPM use 3/4" or 1" housing, 10 - 50 GPM use 1 1/2" housing, 18 - 100 GPM use 2" housing. Oversizing the filter can lead to excessive wear or premature clogging of the filter element due to the lack of spin-out action.
- Standard filter elements (43-E) are interchangeable within the filter housing.
- Molded heavy duty PVC filter body
- Clear polycarbonate filter bowl allows for visual inspection of flow, filter performance.
- Each filter is shipped complete with a purge valve and Teflon Tape® for the 1/2" MPT drain cleanout providing an easy means to flush (clean) filtrates which are deposited on the outside filter screen without having to shut off the water supply.
- All materials are non-corrosive and are ultraviolet stabilized / weather resistant.
- Dimensions:

1 1/2"	Combo and T	Length: 15 3/8"	Width: 5 1/4"	Inlet/Outlet: 1 1/2" Slip
2"	Combo and T	Length: 17 7/8"	Width: 5 1/2"	Inlet/Outlet: 2" Slip
- 150 PSI Maximum Working Pressure.
- Maximum Operating Temperature 100°F (38°C).

WARNING: HAND TIGHTEN ONLY - USE OF TOOLS VOIDS WARRANTY



1 1/2" & 2" IN-LINE T FILTER HOUSINGS

PART NO.	SIZE	DESCRIPTION	LIST PRICE-A
43-H15T	1 1/2"	Complete Housing - 10 Per Carton (Filter Elements Sold Separately) Use with Models-43-E15PM, 43-E15SM	\$ 76.12
43-HB15T	1 1/2"	Replacement Filter Head/Body (White PVC)	30.01
43-HC15TC	1 1/2"	Replacement Filter Cover/Bowl (Clear Polycarbonate) Replacement bowl does not include purge valve	40.51
43-H20T	2"	Complete Housing - 10 Per Carton (Filter Elements Sold Separately) Use with Models-43-E20PM, 43-E20SM	119.26
43-HB20T	2"	Replacement Filter Head/Body (White PVC)	49.35
43-HC20TC	2"	Replacement Filter Cover/Bowl (Clear Polycarbonate) Replacement bowl does not include purge valve	63.83



1 1/2" & 2" IN-LINE COMBO FILTER HOUSINGS

- Versatile heavy duty PVC combo filter head allows for "L" or in line "T" installation. Each filter includes one slip bushing with a 1 1/4" threaded plug to close off the outlet which is not required while leaving an optional 1 1/4" outlet that can be utilized as a second outlet at a later time.

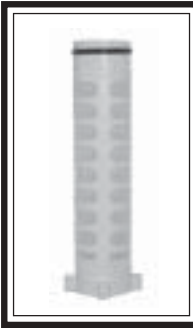
PART NO.	SIZE	DESCRIPTION	LIST PRICE-A
43-H15C	1 1/2"	Complete Housing - 10 Per Carton Use with Models 43-E15PM, 43-E15SM	\$ 85.21
43-HB15C	1 1/2"	Replacement Filter Head/Body (White PVC)	39.09
43-HC15TC	1 1/2"	Replacement Filter Cover/Bowl (Clear Polycarbonate) Replacement bowl does not include purge valve	40.51
43-H20C	2"	Complete Housing - 10 Per Carton (Filter elements sold separately) Use with MODELS 43-E20PM, 43-E20SM	136.52
43-HB20T	2"	Replacement Filter Head/Body (White PVC)	49.35
43-HC20TC	2"	Replacement Filter Cover/Bowl (Clear Polycarbonate) Replacement bowl does not include purge valve	63.83

NOTE: See elements and accessories on Page 6-3



Telephone: 1-888-838-8801
 Fax: 1-519-595-4380
 Web: www.plumbeeze.com

6-3
 February 28/2005



FILTER ELEMENT REPLACEMENTS FOR 3/4" & 1" FILTERS

POLYESTER PART NO.	UPC 777808+	LIST PRICE-A	STAINLESS STEEL PART NO.	UPC 777808+	LIST PRICE-A	MESH	MICRON	OPENING
PE-SFE10PM-024	309702	\$ 18.32			\$	24	711	.028"
PE-SFE10PM-030	309719	18.32				30	533	.021"
PE-SFE10PM-040	309726	18.32				40	381	.015"
PE-SFE10PM-060	223671	18.74	PE-SFE10SM-060	309573	27.68	60	254	.010"
PE-SFE10PM-100	223688	18.74	PE-SFE10SM-100	309580	28.52	100	152	.006"
PE-SFE10PM-140	309535	18.74	PE-SFE10SM-140	309597	29.70	140	104	.004"
			PE-SFE10SM-200	309603	37.57	200	80	.0032"
PE-SFE10PM-250	309542	20.90				250	61	.0024"
PE-SFE10PM-500	309559	20.90				500	30	.0012"
PE-SFE10PM-1000	309566	20.90				1000	15	.0006"



ACCESSORIES FOR 3/4" & 1" FILTERS

PART NO.	LIST PRICE-A	DESCRIPTION
43-CG100	\$ 9.53	Cover Guard For 1" In Line "T" Housing (UV Protection)
43-OR10K	4.42	"O" Ring Kit
43-PV-05	POR	1/2" Purge Valve, same as Part No. 0921-05
43-8	2.77	1" Slip X 3/4" FPT Bushing



POLYESTER MESH FILTER ELEMENTS FOR 1 1/2" & 2" INLINE & COMBO FILTER HOUSING

FOR 1 1/2" FILTERS			FOR 2" FILTERS				
PART NO.	LIST PRICE-A		PART NO.	LIST PRICE-A	MESH	MICRON	OPENING
43-E15PM-024	\$ 32.37		43-E20PM-024	\$ 53.77	24	711	.028"
43-E15PM-030	32.37		43-E20PM-030	53.77	30	533	.021"
43-E15PM-040	32.37		43-E20PM-040	53.77	40	381	.015"
43-E15PM-060	35.21		43-E20PM-060	57.63	60	254	.010"
43-E15PM-100	35.21		43-E20PM-100	57.63	100	152	.006"
43-E15PM-140	35.21		43-E20PM-140	57.63	140	104	.004"
43-E15PM-250	39.14		43-E20PM-250	63.46	250	61	.0024"
43-E15PM-500	39.14		43-E20PM-500	63.46	500	30	.0012"
43-E15PM-1000	39.14		43-E20PM-1000	60.55	1000	15	.0006"

STAINLESS STEEL MESH FILTER ELEMENTS

43-E15SM-030	45.21	43-E20SM-030	62.04	30	533	.021"
43-E15SM-060	46.70	43-E20SM-060	72.99	60	254	.010"
43-E15SM-100	48.20	43-E20SM-100	76.38	100	152	.006"
43-E15SM-140	50.56	43-E20SM-140	81.65	140	104	.004"
43-E15SM-200	51.43	43-E20SM-200	83.54	200	80	.0032"

MAXIMUM OPERATING TEMPERATURE 100°F (38°C)



ACCESSORIES FOR 1 1/2" & 2" FILTERS

FOR 1 1/2" FILTERS		FOR 2" FILTERS		DESCRIPTION
PART NO.	LIST PRICE-A	PART NO.	LIST PRICE-A	
43-CG150	\$ 12.37	43-CG200	\$ 14.26	Coverguard (UV Protection)
43-OR15K	5.05	43-OR20K	5.52	"O" Ring Kit
43-PV-05	POR	43-PV-05	POR	Purge Valve, same as 0921-05
43-1	4.84			SCH. #40 PVC 1 1/2" Slip X 1 1/4" FPT Bushing
43-2	4.84			SCH. #40 PVC 1 1/2" Slip X 1" FPT Bushing
43-3	4.85			SCH. #40 PVC 1 1/2" Slip X 3/4" FPT Bushing
		43-9	6.43	SCH. #40 PVC 2" Slip X 1 1/2" FPT Bushing
		43-10	5.82	SCH. #40 PVC 2" Slip X 1 1/4" FPT Bushing
		43-11	5.82	SCH. #40 PVC 2" Slip X 1" FPT Bushing
		43-12	5.82	SCH. #40 PVC 2" Slip X 3/4" FPT Bushing
43-4	5.06	43-4	5.06	1 1/4" MPT Plug
43-15	2.47			1" SLIP x 1" FPT Female Adapter
43-16	3.22			1" SLIP x 1" MPT Male Adapter

Pricing subject to change. Please confirm pricing with your Sales Rep.

HOT WATER/CHEMICAL RESISTANT SEDIMENT FILTER

Available in Sand Separator Filter and Standard Filter

APPLICATIONS

●Specially designed to remove large volumes of sediment from hot water and a wide range of chemicals on systems with flow rates up to 25 GPM. These spin-out filters are available in two models "standard" and "separator" (extended bowl) housings. The extended filter bowl provides greater sediment holding capacity than the standard housing. The separation of the filtrate from the filter element compartment greatly reduces the abrasion on the filter element increasing its life span. These filters are ideal for a multitude of applications in agricultural, commercial and industrial fields. Over-all filtration costs are greatly reduced when used as a pre-filter in duplex filtration systems by preventing fine micron post-filtration cartridges from plugging prematurely.

FEATURES/CONSTRUCTION/RATINGS

- Spin out action creates centrifugal force which ensures that particulate is forced outward to the filter bowl protecting the filter element from abrasion
- Black heavy duty glass filled polypropylene filter head with # 304 stainless steel supporting rings on both 3/4" FPT inlet / outlet connections
- Clear chemical / heat resistant HP Polymer filter bowl allows for visual inspection of flow and filter performance
- Both standard and sand separator elements are manufactured from a glass filled polypropylene core with a stainless steel mesh
- Each filter is shipped complete with a purge valve for the 1/2" MPT drain cleanout port providing an easy means to flush (clean) filtrates which are deposited on the outside of the filter screen without having to shut off the water supply
- All materials are non-corrosive and are ultraviolet stabilized / weather resistant
- Dimensions:
 - 3/4" Standard Housing (43HT-H07T) Length 8 1/2", Width 5", Inlet / Outlet 3/4" FPT
 - 3/4" Separator Housing (43HT-H07S) Length 11 1/2", Width 5", Inlet / Outlet 3/4" FPT
- Maximum Working Pressure 150 PSI @ 73°F (23°C) 40 PSI @ 200°F (93°C)
- Maximum Operating Temperature 200°F (93°C)

WARNING: HAND TIGHTEN ONLY - USE OF TOOLS VOIDS WARRANTY



STANDARD HIGH TEMP HOUSING/FILTER ELEMENTS

PART NO.	DESCRIPTION	LIST PRICE - A		
43HT-H07T	3/4" Standard Filter - Complete Housing (10 per carton) C/W Purge Valve and Teflon® Tape Note: Filter elements sold separately	\$ 184.32		
43HT-HC07T	Replacement Filter Bowl for Standard Filter (Clear Bowl) - Does not include purge valve	66.55		
43HT-HB07T	Replacement Filter Head (Black Poly)	90.58		
43HT-PV-05	Replacement Purge Valve	26.18		
STANDARD ELEMENTS	LIST PRICE-A	MESH	MICRON	OPENING
43HT-E07SM-030	\$ 44.95	30	533	.021"
43HT-E07SM-060	44.95	60	254	.010"
43HT-E07SM-100	44.95	100	152	.006"
43HT-E07SM-140	44.95	140	104	.004"
43HT-E07SM-200	44.95	200	74	.0029"



SEPARATOR HIGH TEMP HOUSING/SEPARATOR ELEMENTS

PART NO.	DESCRIPTION	LIST PRICE - A		
43HT-H07S	3/4" Sand Separator Housing (10 per carton) C/W Purge Valve and Teflon® Tape Note: Separator elements sold separately	\$ 211.66		
43HT-HC07S	Replacement Filter Bowl For Sand Separator (Clear Bowl) - Does not include purge valve	93.65		
43HT-HB07T	Replacement Filter Head (Black Poly)	90.58		
43HT-PV-05	Replacement Purge Valve	26.18		
SEPARATOR ELEMENTS	LIST PRICE-A	MESH	MICRON	OPENING
43HT-S07SM-030	\$ 47.96	30	533	.021"
43HT-S07SM-060	47.96	60	254	.010"
43HT-S07SM-100	47.96	100	152	.006"
43HT-S07SM-140	47.96	140	104	.004"
43HT-S07SM-200	47.96	200	74	.0029"



SEDIMENT FILTERS

APPLICATIONS

- Whole house residential use
- Agriculture
- Green house, irrigation

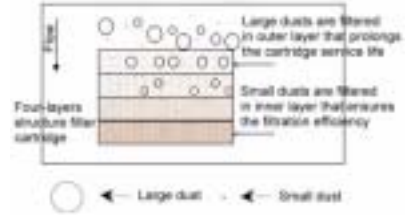
FEATURES

Housing

- Compact design
- Filter head from polypropylene
- Clear bowl from styrene-acrylonitrile
- Blue bowl from polypropylene
- Pressure relief/bleed button on inlet side
- EPDM "O"-Ring
- Utilizes industry standard cartridge: 2 1/2" thru 2 3/4" O.D. x 9 3/4" length
- Max. Operating Temp. 120°F (50°C)
- Max. Operating Pressure - 125 PSI

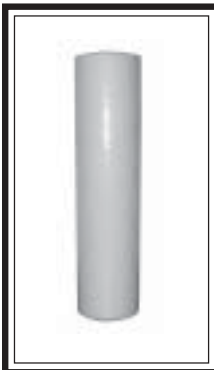
Cartridge

- 100% high purity polypropylene
- 10 Micron rating
- 4 layer construction with variable micron rated structure prolongs filter life. Largest particles are trapped by outside layers and finer particles are trapped by inside layer.



PART NO.	UPC	LIST PRICE-A	INLET/OUTLET	BOWL LENGTH	FLOW GPM	DIMENSIONS	SHIPPING WGT-lbs	CASE QTY
PEHK-10C	309504	\$ 32.73	3/4" FPT	10" Clear	1 - 10*	12" x 5"	3	1
PEHK-10B	309498	31.35	3/4" FPT	10" Blue	1 - 10*	12" x 5"	3	1

*Actual maximum flow rates vs. pressure drop will be determined based on cartridge selections and fluid viscosity.
 WARNING: All housings must be protected against freezing and should not be installed where exposed to direct sunlight. Failure to do so may result in cracking of the filter and water leakage.



SPUN POLYPROPYLENE DEPTH CARTRIDGES

- The filter cartridge is manufactured with melt blown technology into a multi-layer structure to provide superior filter efficiency, pressure drop and cartridge life.

APPLICATION

- Standard specification meets most of the housings in the market.
- General industrial RO systems, food and beverage, commercial and home RO system use.

FEATURES

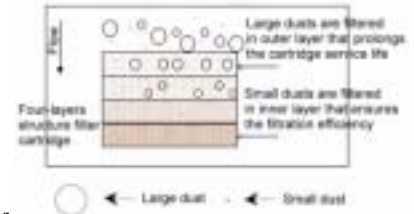
- Four (4) layer (outside-in), varied micron rate filter structure to capture particles (from larger to smaller) effectively and prolong cartridge life. Cartridge can achieve up to two times that of the double layers.
- 100% high purity polypropylene which is surfactant free, binder free and adhesive free.
- Good chemical resistance and is not prone to bacterial attack.
- NSF approved 42

OPERATING CONDITIONS

- Maximum operating temperature rating: 140°F (60°C)
- Maximum operating forward pressure drop: 60(C): 1.8kg/cm2
20(C) 3.2 kg/cm2
- Replacing pressure drop 1.5kg/cm2

PRODUCT SPECIFICATIONS

- Micron rating: (Normal/Nominal)
- Materials of construction: 100% melt-blown micron-denier polypropylene fiber
- Length 9.87" Inner Diameter: 28 mm Outer Diameter: 63 mm



PART NO.	UPC	LIST PRICE-A	FLOW GPM	MICRON RATINGS	CTN QTY
PE-FCSP-01	330294	\$ 2.24	1 - 3	1	20
PE-FCSP-05	330300	2.24	1 - 5	5	20
PE-FCSP-10	330317	2.24	1 - 10	10	20
PE-FCSP-25	330324	2.24	1 - 12	25	20
PE-FCSP-50	330331	2.24	1 - 17	50	20



GIANT SPUN POLYPROPYLENE DEPTH CARTRIDGES

APPLICATION

- Standard specifications meets most of the housings in the market.
- Domestic and commercial Pre-RO (Reverse Osmosis) usage.

FEATURES

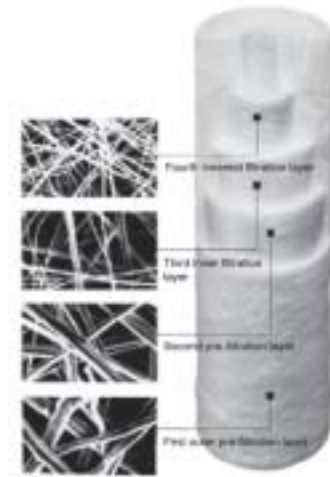
- Four (4) layer (outside-in), varied micron rate filter structure to capture particles (from larger to smaller) effectively and prolong cartridge life. Cartridge can achieve up to two times that of the double layers.
- 100% high purity polypropylene which is surfactant free, binder free and adhesive free.
- Good chemical resistance and is not prone to bacterial attack.
- NSF approved 42

OPERATING CONDITIONS

- Maximum operating temperature: 176°F(80°C)
- Maximum pressure drop: 80 psi
- Recommended replaceable pressure drop: 35 psi

PRODUCT SPECIFICATIONS

- Micron rating: (Normal/Nominal).
- Materials of construction: 100% melt-blown micron-denier polypropylene fiber.
- Length 9.87" Inner Diameter: 30 mm Outer Diameter: 110 mm



PART NO.	UPC	LIST PRICE-A	FLOW GPM	MICRON RATINGS	BAG/CTN QTY
PE-FCGSP-01	330348	\$ 10.85	1 - 10	1	1/8
PE-FCGSP-05	330355	10.85	1 - 15	5	1/8
PE-FCGSP-10	330362	10.85	1 - 20	10	1/8
PE-FCGSP-25	330379	10.85	1 - 25	25	1/8



CAST IRON SAND STRAINER

APPLICATION

- A low cost solution to screen out sediment, grit and dirt from a high flow water supply. Can be installed on either the suction or discharge side of pump with minimal pressure drop. Body and cap are manufactured from a cast iron with a 2-part epoxy finish, a clear plastic filter bowl which allows for visual inspection and furnished with a washable 100 mesh stainless steel screen. These filters are easily cleaned. When used as a pre-filter, the life of your taste and odor cartridges can be dramatically extended.
- Max Vacuum 30" hg
- Max Pressure 100 PSI
- Max Temp 130°F (55°C)

PART NO.	UPC	DESCRIPTION	CASE QTY	LIST PRICE-A
PE-SS100	154739	1 1/4" FPT Connection 100 Mesh Screen	8	\$ 54.52

REPLACEMENT PARTS

PART NO.	UPC	DESCRIPTION	CASE QTY	LIST PRICE-A
U14-SSRS-100	255085	100 Mesh S.S. Screen	1	\$ 20.40
U14-SSRG	255092	Plastic Viewing Sleeve	1	7.08
U14-SSOR	255115	"O"-Rings (2-Per Strainer)	1	3.33
U14-SSNW	255122	Nylon Washer	1	1.22
U14-SSWN	255139	Brass Wing Nut	1	3.38